

TENSION DEVICE



Scan with
your phone
for WCMA

AVAILABLE IN 3 COLORS

- Clear
- White
- Black



WINDOW MODES NOW SELLS ANSI 2022 COMPLIANT BEAD CHAIN TENSION DEVICES

Contact cs@windowmodes.com to place your order for the items below.

| Image | Part # | Description | Sell Price |
|-------|--|---|--|
| | RB91-1351-001110 | Chainhold KIT – Clear Only | \$3.75 each \$68.75 for 25 kits |
| | RB91-1336-001000 RB91-1336-075000 RB91-1336-050000 | Chainhold Cover – Clear Chainhold Cover – White Chainhold Cover – Black | \$.85 each \$15.50 for 25 pieces |
| | RB91-1337-001000 RB91-1337-075000 RB91-1337-050000 | Chainhold Base Assembly – Clear Chainhold Base Assembly – White Chainhold Base Assembly – Black | \$1.90 each \$34.50 for 25 pieces |
| | RB91-1338-001110 | Chainhold Bracket – Clear only | \$1.05 each \$18.95 for 25 pieces |
| | RB91-1338-001210 | Chainhold Floor Fix Bracket – Clear Only | \$1.25 each \$22.95 for 25 pieces |
| | MK04-INST-133102 | Chainhold Instructions | \$.25 each \$3.99 for 25 sheets |
| | HD91-0122-000001 HD91-0122-000002 HD91-0106-000001 | Bottom Rail Label Bottom Rail Label (Narrow) Tension Device Tag | \$10.50 for 25 labels \$20.00 for 25 labels \$4.50 for 25 tags |

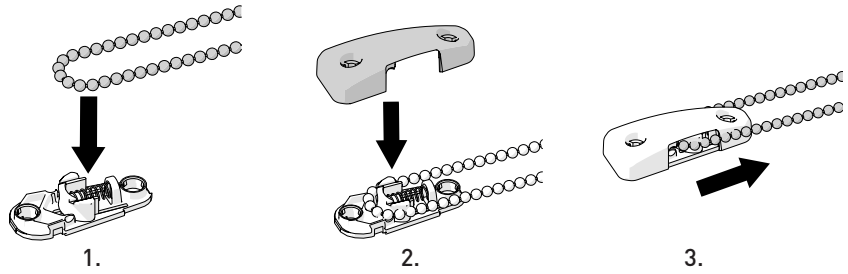
windowmodes

YOUR TRUSTED PARTNER FOR HIGH-QUALITY MANUAL AND MOTORIZED WINDOW TREATMENTS

windowmodes.com • cs@windowmodes.com

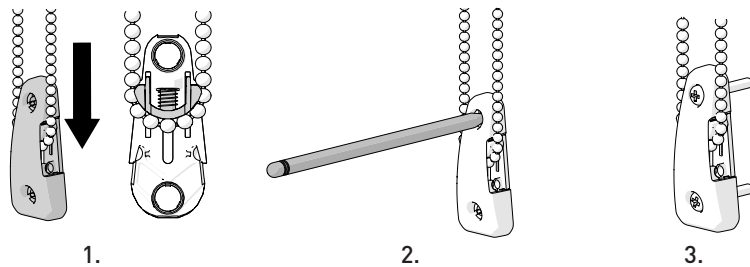
ASSEMBLY

1. Place bead chain on the bottom groove of the Chainhold base.
2. Snap cover onto the base.
3. Pull the chain out of the groove.



INSTALLATION

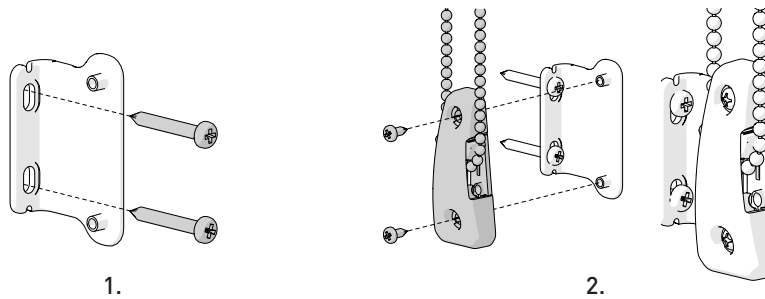
1. Pull the Chainhold down until the chain is fully tensioned (plunger will be fully raised).
2. Mark screw hole locations.
3. Screw device into wall.



ADDITIONAL MOUNTING OPTIONS

1. With provided screws, install bracket first with large screws (use Chainhold marked screw hole locations as reference).
2. Install Chainhold into bracket with small screws.

OUTSIDE MOUNT



FLOOR MOUNT

