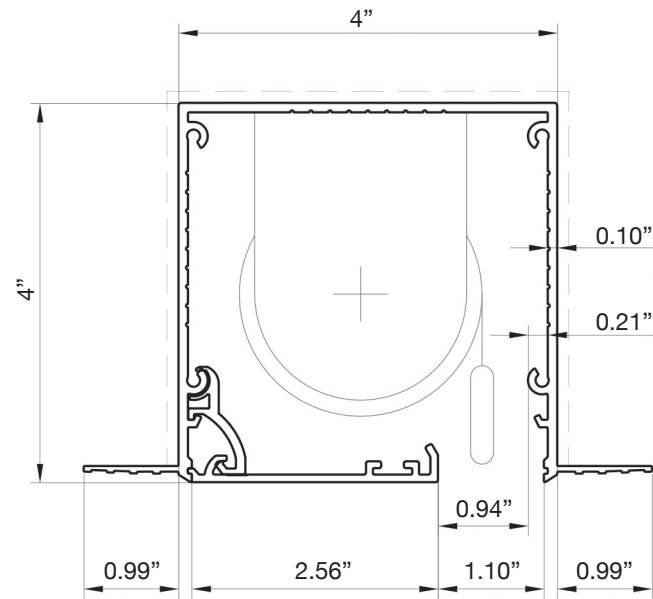


Blindspace® S100X100SS
for Standard Roller Shade

HEAD BOX S100x100SS



6"-1' scale

PRODUCT REFERENCE

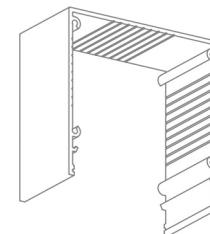
S100x100SS
SERIES SIZE CORNERS

CONCEALMENT CONFIGURATION OPTIONS

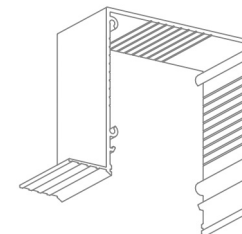


Head Box

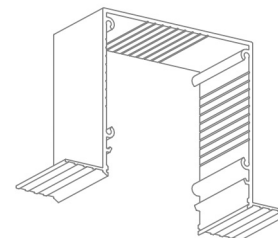
BOX VARIATIONS



S100x100NN
No Flanges



S100x100NS
Skim Coat Flange
on one side
(reversible)



S100x100SS
Skim Coat Flange
on both sides



COVER HINGE
to hold cover plate,
installed on either side

Product	Blindspace S100X100SS
Description	Recessed box with optional flanges and hinged cover to conceal blinds flush with wall or ceiling finished surface.
Shade sizes	Please see size chart and supplier details for blind sizes such as max. width, height and area.
Finishes	Provided in RAL 9016 (white) Optional powder coating to other RAL colours available.
Material	Powder Coated Aluminium, EN 6063 T6
Optional accessories	End cap Splice pin (to align boxes) Splice plate (to align covers)
Installation	Boxes to be fixed with countersunk screws every 7.87" [200mm] through back (and both flanges when available) into appropriate backing. Scrim tape to be used on flanges. Finished plaster level to be flush with cover. Allow 0.12" [3mm] recess space for ease of installation, shown in dash line around boxes
Print date	06/14/2023
Page size	11"x17"
Print file	blindspace s100x100ss with standard roller blind [inch].dwg