

# SECURSHADE

BY  
  
window *modes*



# Feature Overview

<b>Features of SecurShade by Window Modes</b>	<b>Manual</b>	<b>Motorized</b>	<b>Shade Management by Window Modes</b>
Shades will all drop when emergency button is pressed	X	X	X
Alert is sent to an on-screen display	X	X	X
One Way Node Status when emergency button is activated	X	X	X
A text message alert gets sent to designated personnel (i.e. school safety officer, principal, etc.)	X	X	X
Adaptive to any district's emergency readiness plan		X	X
Integrate with existing building management systems	X	X	
Shades can be operated for daily use	X	X	X
Motorized shades can be used for energy efficiency		X	X
Maximum Shade Size = 96" x 96" for manual shades	X		
Maximum Shade Size = 200" x 200" for motorized shades		X	
Two way feedback - Shade positions can be seen through an app or a browser on-line		X	X
Control of all shades can be handed off to first responders and emergency personnel to raise or lower shades		X	X
All shades can be raised remotely		X	X
Window Modes will provide building management system ( <i>in development</i> )			X
Shade position can be a silent notification for evacuation or shelter-in-place		X	X
Dry contact integration is available for schools with existing emergency systems	X	X	
Current Shade Position - bi directional feedback			X
Status of shades provided over a floor-plan of the facility			X

# General Information

## What is SecurShade?

The patented SecurShade security shade system is designed to function as both a commercial-grade window shade treatment to improve the safety and security of a building's occupants.

## Where do I install SecurShade?

The SECURSHADE system can be installed on both interior and exterior windows in every room in a building that could be subject to natural or human threat. There is a Node, at least one Switch, and usually a remote in each room. There is also a Gateway that monitors and controls the system.

## Building Management:

- Improved energy savings when all the window shades are down during extreme weather and when the building is empty. Shades stay down until raised, resulting in much higher utilization of their energy benefit.
- "Smash & Grab" theft can be discouraged.
- Buildings look better when all the shades are uniformly down.
- Advanced fabrics can improve natural lighting and reduce hot spots in a room.

## Security & Safety:

- SecurShade can remove sight lines into rooms across a whole campus.
- The very rapid closure of all the shades can provide a strong visual alert, inside and outside the building, even for the hearing impaired.
- Administrators immediately know where the system is activated to inform authorities. Allows for better decision making.
- Fabric adds added protection from flying glass during severe weather or an earthquake.
- The system can be activated by anyone using a remote with very long range, or by wall switch.
- The system can be integrated with other building management systems.

## Improved Teaching Environment:

- Remote control over window shades can provide teachers added peace of mind from the "fishbowl effect."
- Remote lowering of shades in a single classroom for an AV presentation, etc., allows the teacher to better control the class.

## CONSIDERATIONS FOR SCHOOL ADMINISTRATIONS

- Durable, long-lasting, high-quality window shade
- Improve energy efficiency with motorized shades
- Close all window shades almost instantly - when seconds can count
- Improve occupant confidence - a highly visible, non-obtrusive building management system
- Improve occupant comfort, removing hot spots and making rooms cooler and warmer
- Improve the learning environment by dispersing natural light across the room
- Improve the teaching experience with remote closure of an individual classroom's shades
- Is a smart choice when replacing old worn-out window shades
- Effective building management

## Everyday Benefits:

Under regular everyday use, SecurShades can function as an energy efficient window shade that lets natural light in while keeping heat out in summer, and retain heat in winter.

The system is designed to be activated every night and on weekends. This pattern of activation is strongly encouraged as it ensures the shades full benefit (privacy, security, heat control etc.) as well as identifying any malfunctioning shades quickly.

The system can be integrated with other building management systems

# Shade Management by Window Modes

The **GREEN** window icons indicate which window shades are open.  
Closed shades are indicated in **RED**.

The **GREEN** alarm icon indicates the emergency button has NOT been activated.



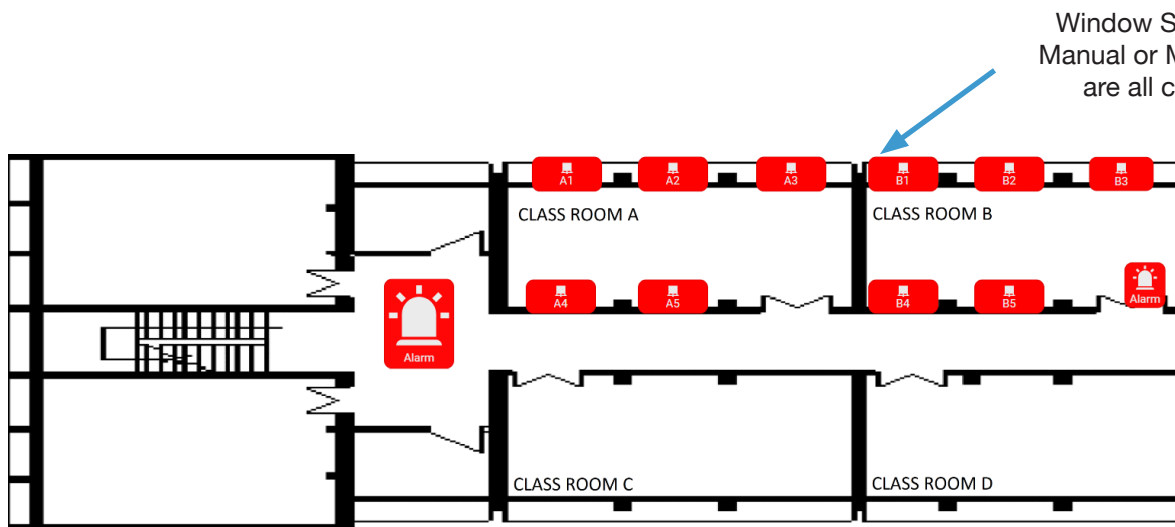
Window Shades can be adjusted in different rooms.

Scenario 1 shows all exterior shades are closed.

Scenario 2 shows that only classroom A chose to close their exterior shades.

The **RED** window icons indicate which window shades are closed.

The **RED** alarm icon indicates that an emergency button has been activated.





**YOUR TRUSTED PARTNER FOR HIGH-QUALITY  
MANUAL AND MOTORIZED WINDOW TREATMENTS**

**Contact Information:**  
914-665-4545  
[cs@windowmodes.com](mailto:cs@windowmodes.com)

