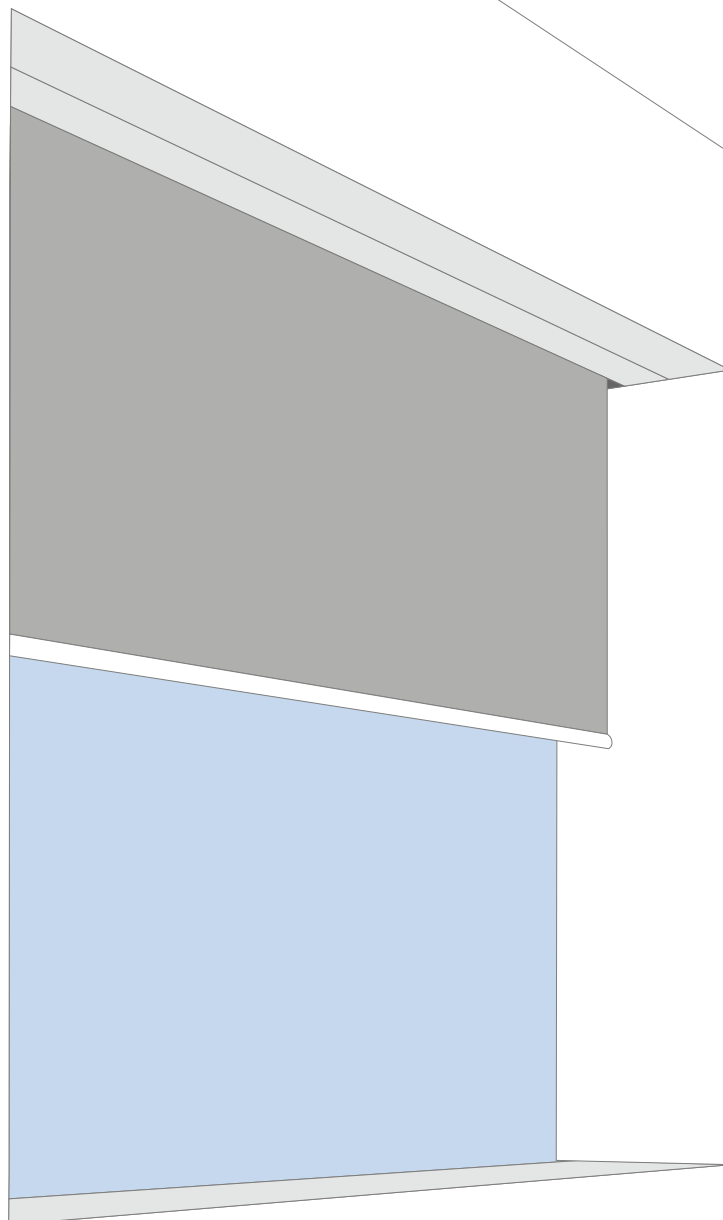


# INSTALLING BLINDSPACE®

## HEAD BOX (S) (C) Series

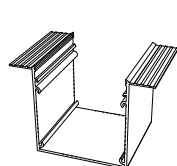


# INSTALLING BLINDSPACE®

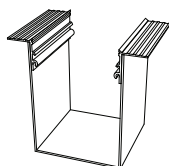
## HEAD BOX (S) (C) Series

**NOTE:** Precision is important for perfect end result. Boxes must be securely attached within ceiling or wall. System fixings are never supplied by Blindspace, installer to ensure their fixing are suitable.

### PARTS

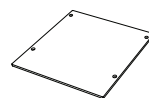


S-Series

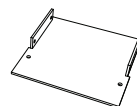


C-Series

Box

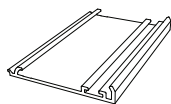


S-Series



C-Series

End caps



Cover



S & C-Series

Hinge



Splice Pins

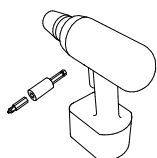


Splice Plates

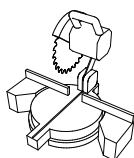


Hole Grommet

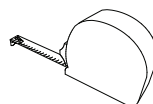
### TOOLS



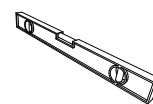
Screw Driver/Driller



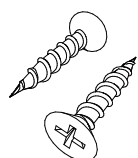
Power Chop Saw



Tape Measure



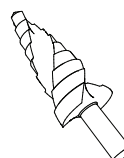
Spirit Level



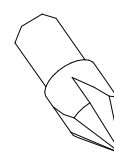
Countersunk Screws



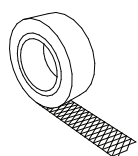
Drill Bits



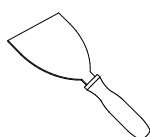
Stepped Drill Bit



Countersink Drill Bit



Scrim Tape



Scraper

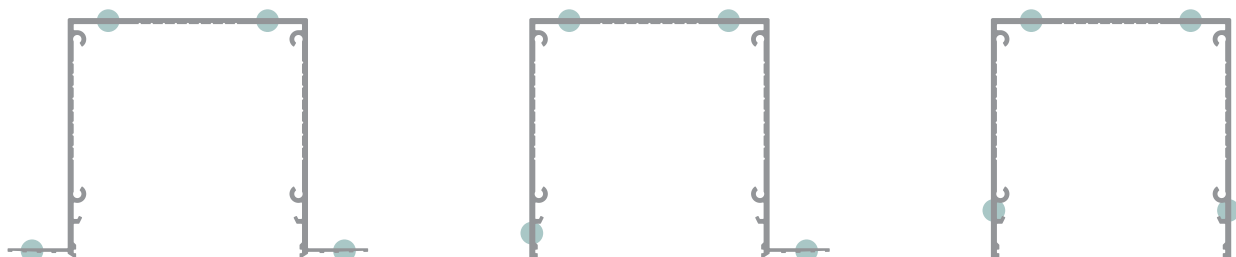
# INSTALLING BLINDSPACE®

## HEAD BOX (S) (C) Series

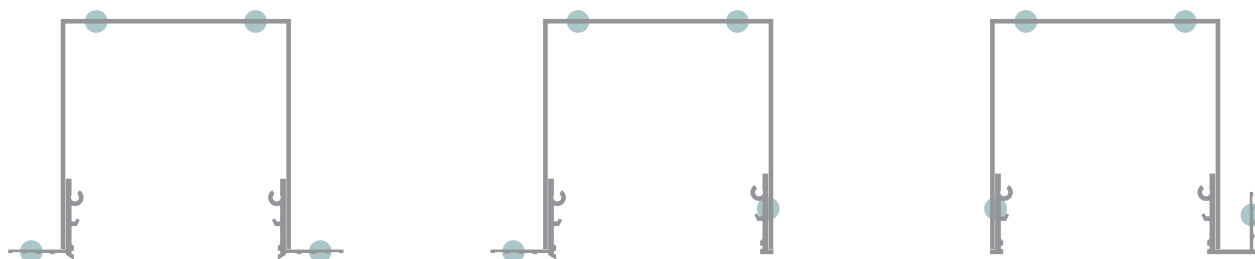
NOTE: These are example fixing points showing boxes with and without skim coat flanges. Boxes should be fixed in the top of the box and through the sides if recessed. Installer to ensure their fixing are suitable. Standard box with two skim coat flanges have been used for illustrative purposes.

### BOX FIXING POINTS

(S)



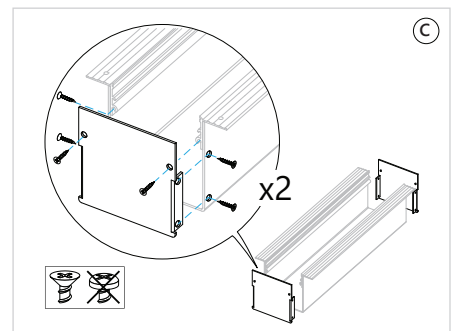
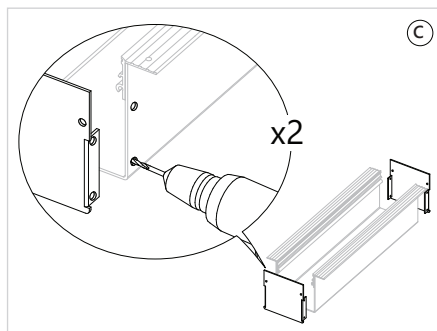
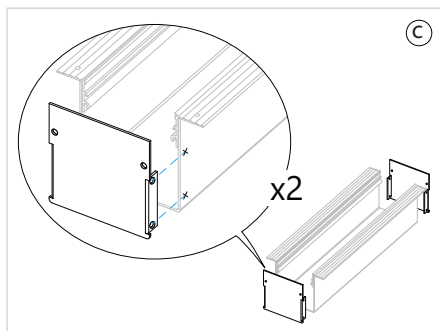
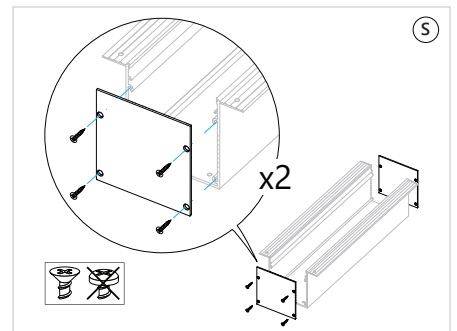
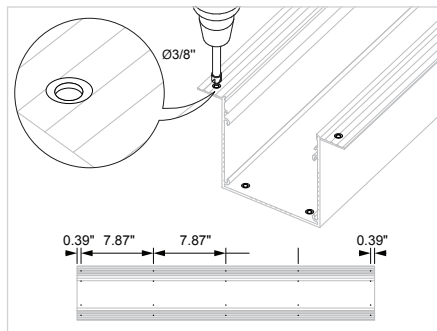
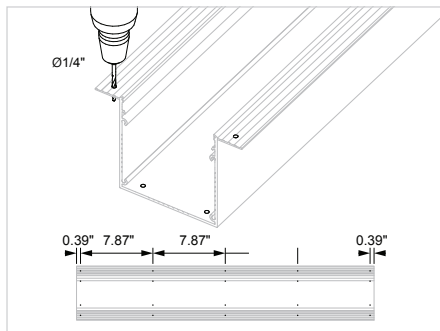
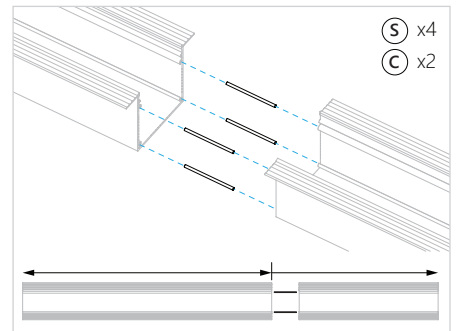
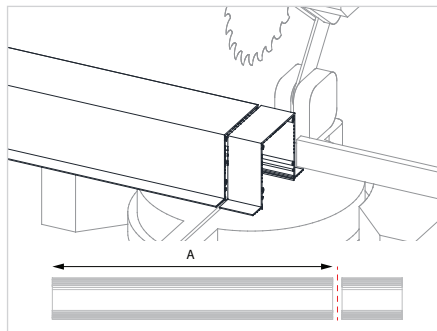
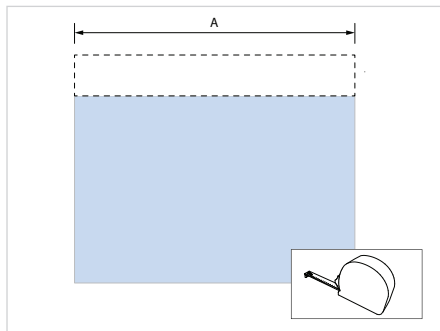
(C)



# INSTALLING BLINDSPACE®

## HEAD BOX (S) (C) Series

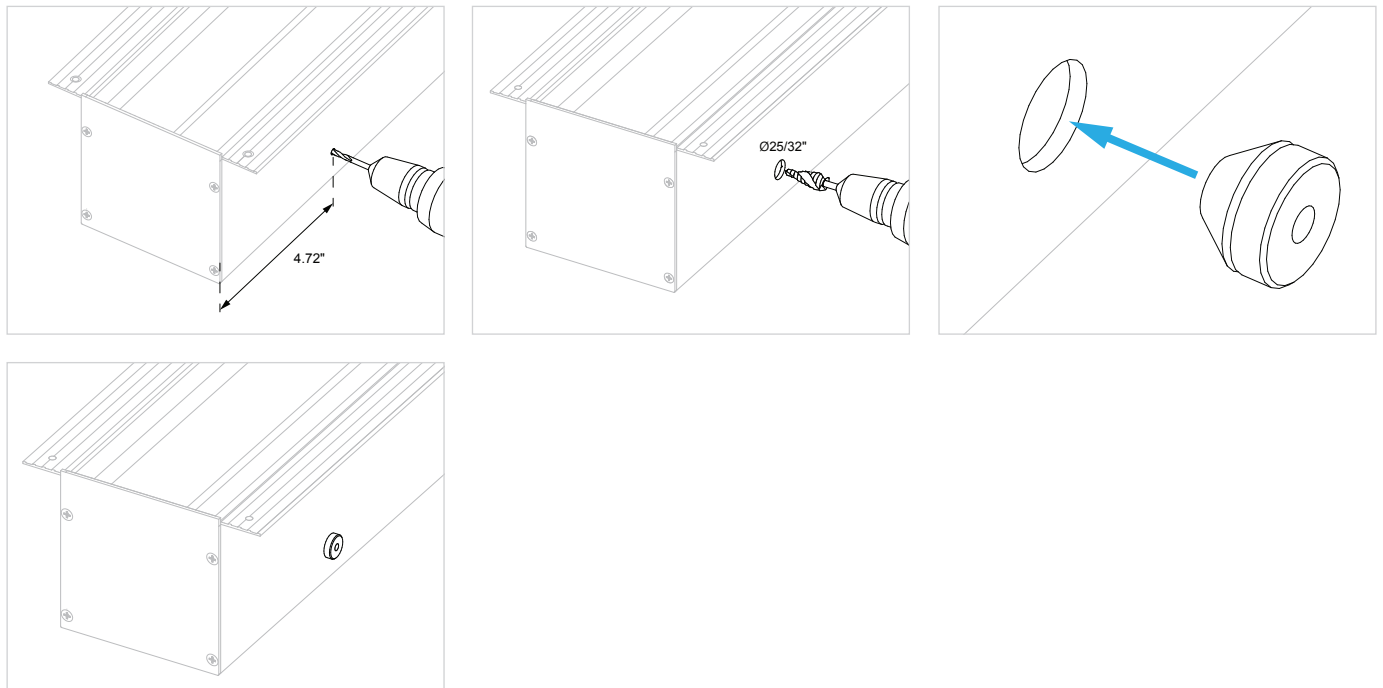
### PREPARE THE PRODUCT



# INSTALLING BLINDSPACE®

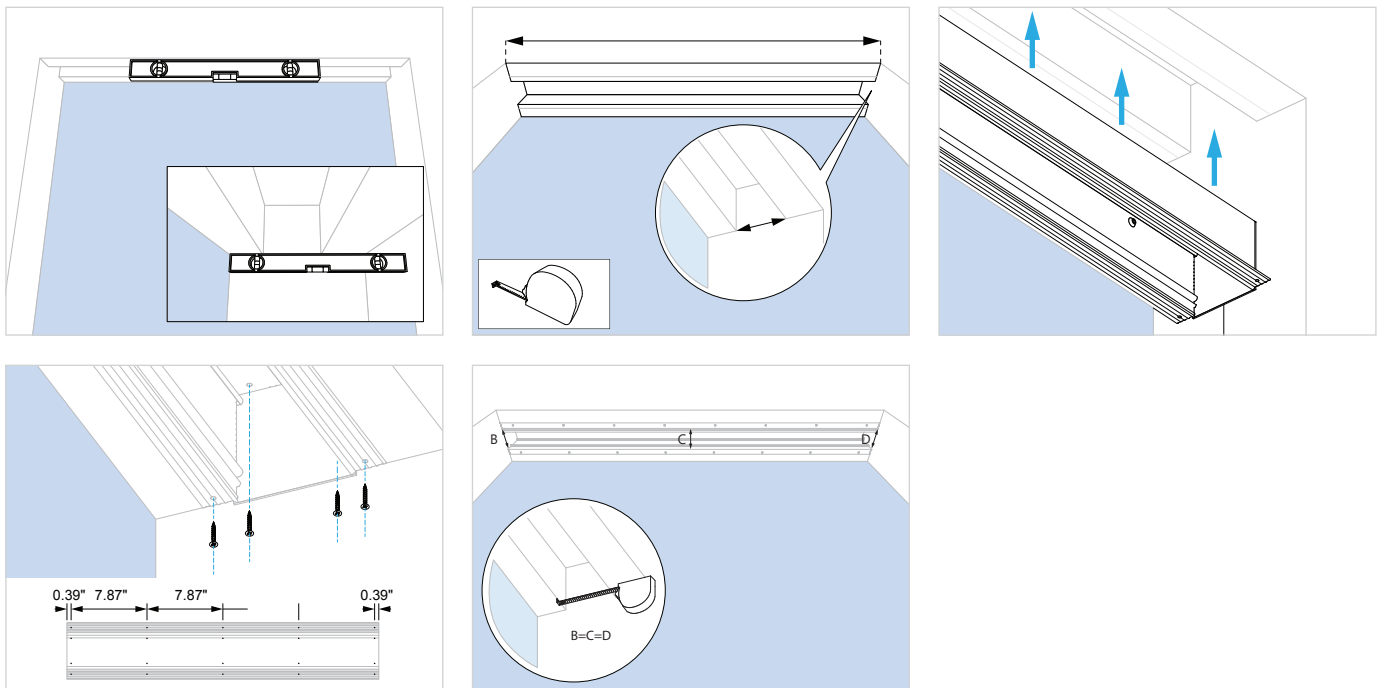
## HEAD BOX (S) (C) Series

### EXAMPLE CABLE ENTRY POSITION



### INSTALL HEAD BOX

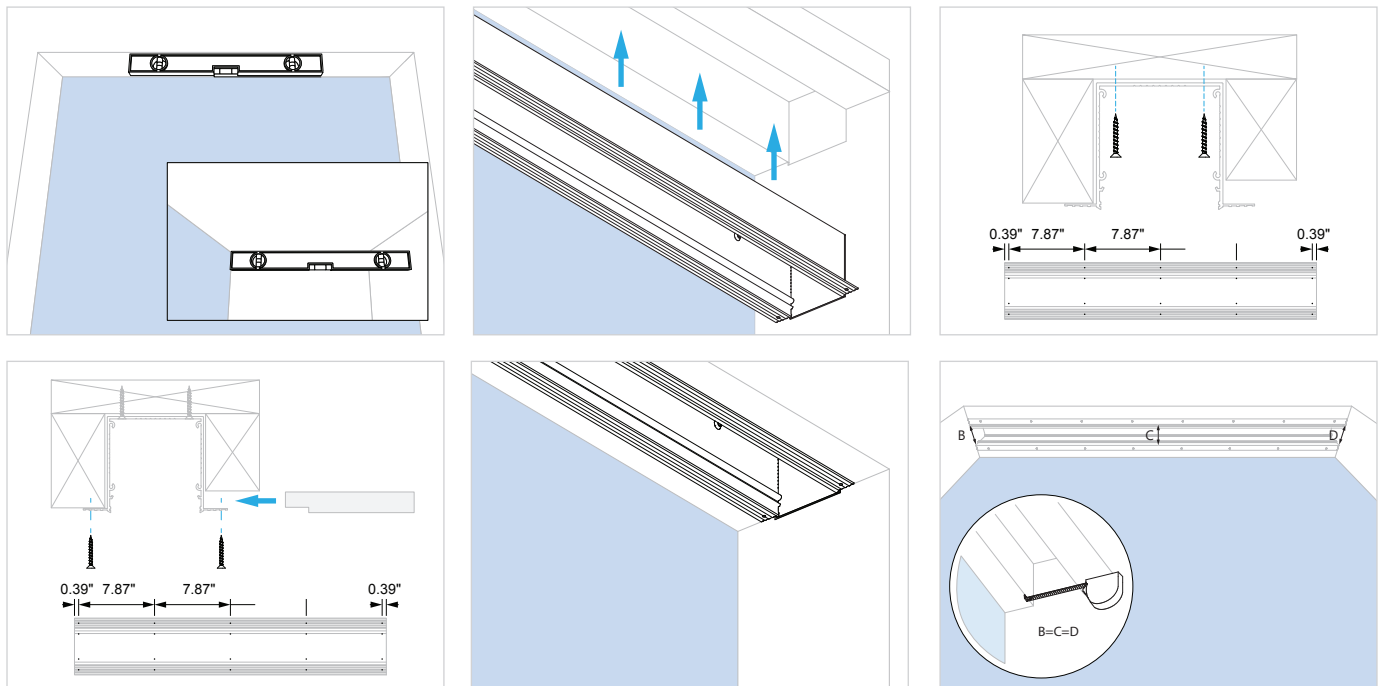
#### OPTION A: PREPARED RECESS INSTALLATION



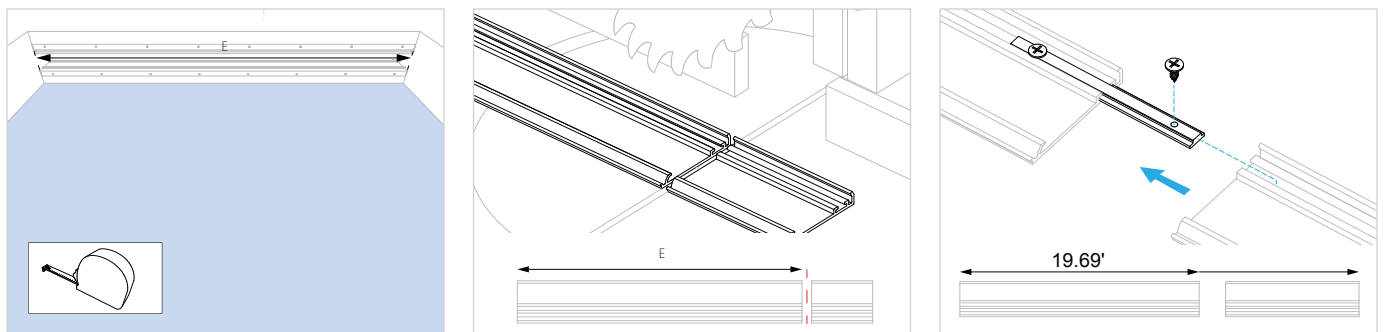
# INSTALLING BLINDSPACE®

## HEAD BOX (S) (C) Series

### OPTION B: BOX FIRST INSTALLATION



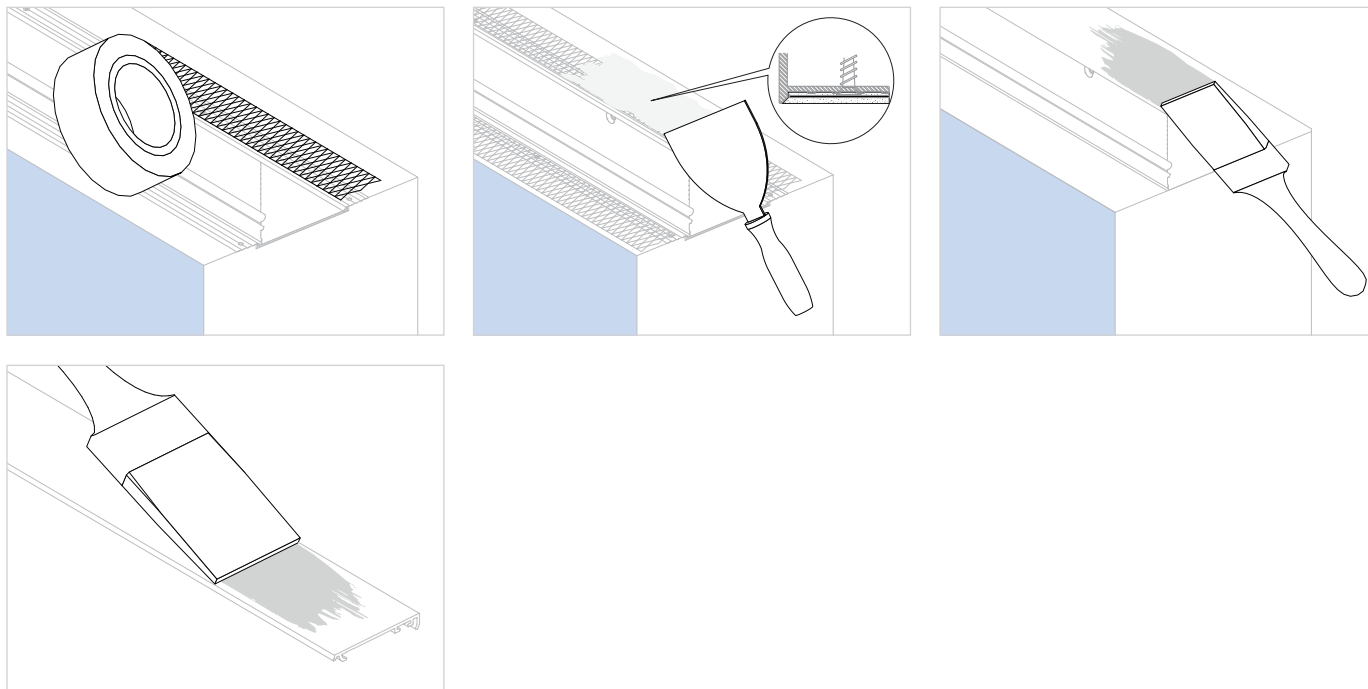
### PREPARE COVER



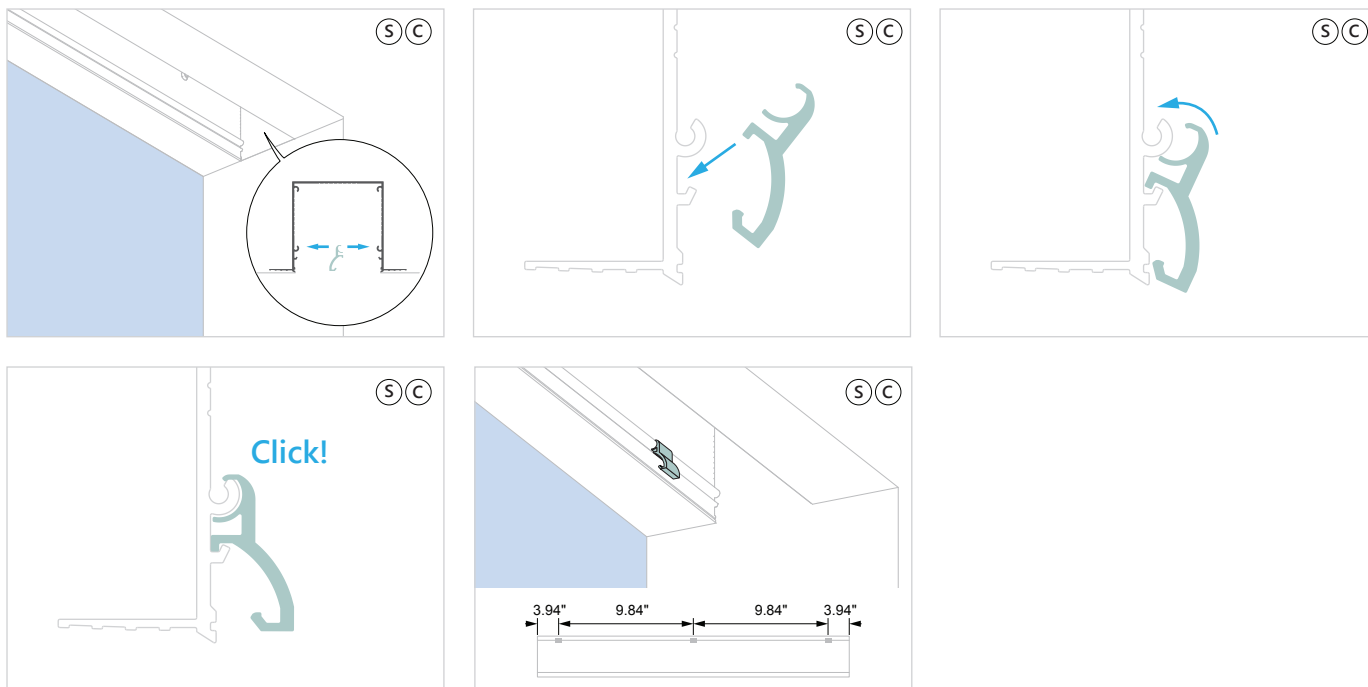
# INSTALLING BLINDSPACE®

## HEAD BOX (S) (C) Series

### SKIM COAT AND PAINT



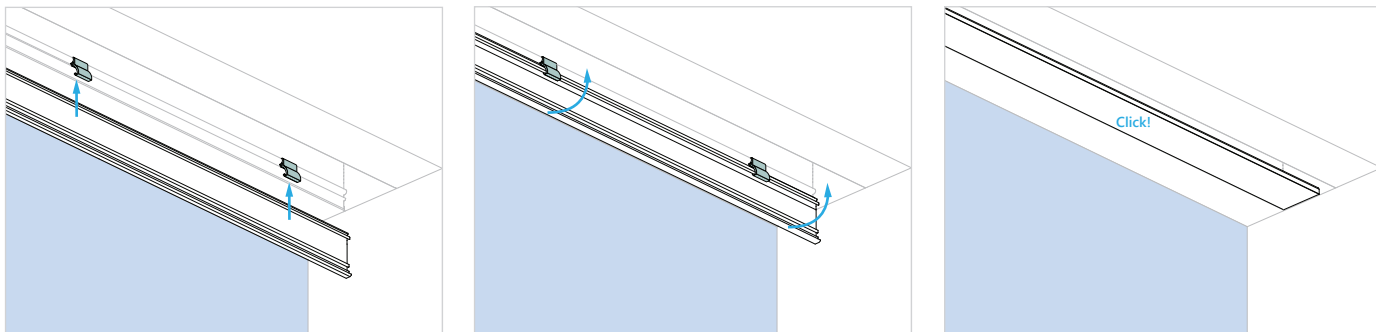
### HINGE



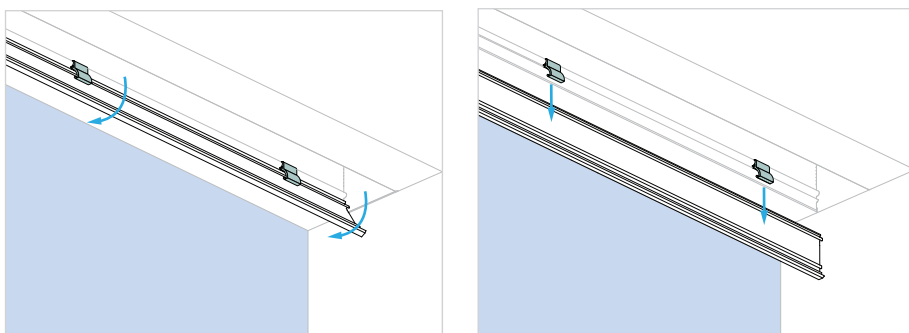
# INSTALLING BLINDSPACE®

## HEAD BOX (S) (C) Series

### CLOSE BOX



### OPEN BOX



### FINISHED LOOK

