

BL'NDSPACE®

FOR

window *modes*



C SERIES

CUSTOM SIZES FOR ALL SHADE TYPES

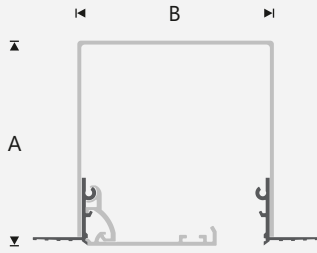
DESIGNED TO DISAPPEAR

Blindspace® C Series boxes can be made to any size, to conceal all types of shades, achieving minimal visual impact. The box is installed during construction with the space accessible for shade installation once the room is completed. It features the patented Blindspace® Safety Hinge that secures the cover in place and can be installed in any direction, together with side boxes to hide shade side channels and/or guide wires.

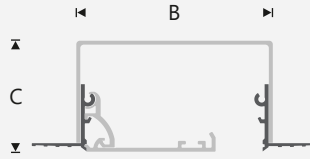
Custom C Series boxes are used for very large shades, double shades, gable shades and skylight shades. C Series boxes can also be installed to future-proof buildings to have the option to install concealed shades later.



Custom Head Box



Custom Side Box



Accessories



Clip-on Hinge Splice Pin Splice Plate

Clip-on Hinge to connect boxes and cover flaps.
Splice Pin to align and connect multiple boxes.
Splice Plate to align multiple cover flaps.

Box Corners



S - Skim coat flange.



U - Upstand flange.



V - Visible plain flange.



N - No flange.

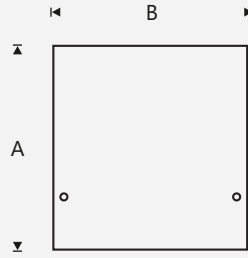


P - Perforated flange.

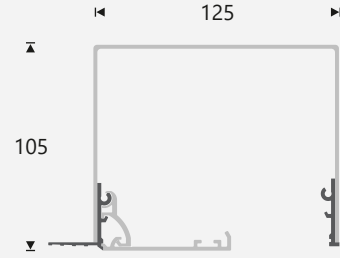
Cover Flaps

Cover	Diagram
2.56"	
2.95"	
3.35"	
3.74"	
4.53"	
4.92"	
5.91"	
2.87"	

Custom End Cap



Example C125x105SN Headbox



Distributor

Blindspace for Window Modes
Web: windowmodes.com/blindspace
Email: blindspace@windowmodes.com
Phone: 914-665-4545

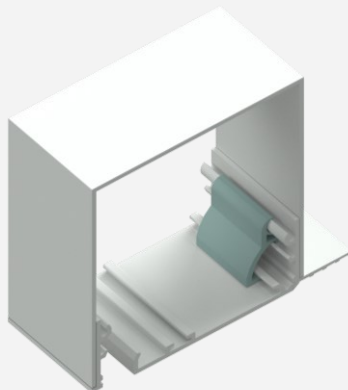
Description

Concealment system to hide roller shades or to future-proof windows for installation of shades, with safety hinge that secures the cover in place.

Material & Finish

Aluminium, EN 6063 T6
Powder coated white RAL9016, 30% gloss
Powder coated to specific RAL colour
Raw aluminium

FEATURES



Seamless appearance after painting

Plaster is feathered over skim coat flanges to hide the box leaving only a thin hairline between the ceiling and the Blindspace® cover.

Cover painted to match window or ceiling

The cover can be provided in specific RAL colour or painted at site with primer and emulsion paint, to match window or ceiling.

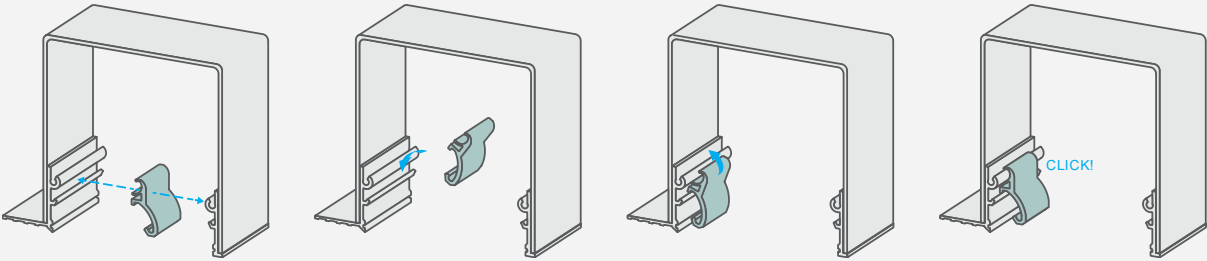
Safety hinge securing the cover in place

The safety hinge can be installed on either side of the box and ensure that the cover is not falling to the floor if accidentally opened.

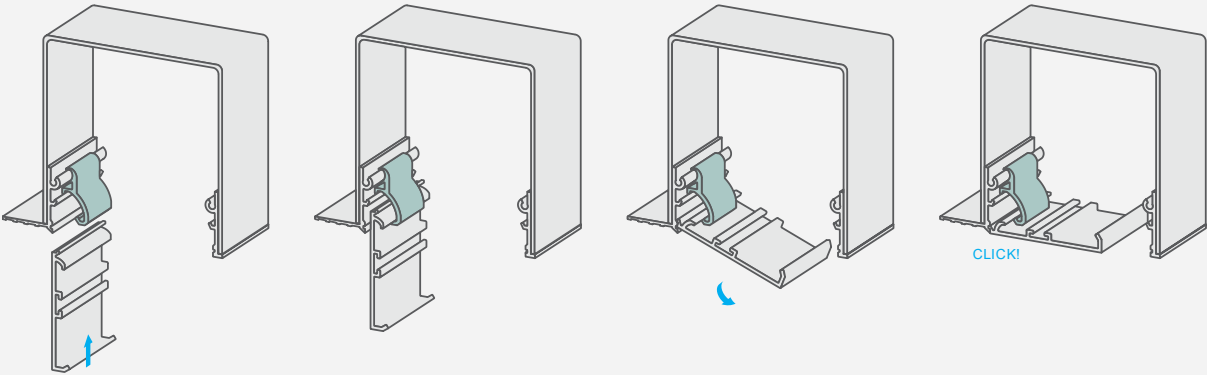
Cut to finished length, maximum 6m

Blindspace boxes and covers are supplied by manufacturer cut to finished length or in 3m or 6m lengths. Splice pins and plates are supplied to align multiple boxes and covers.

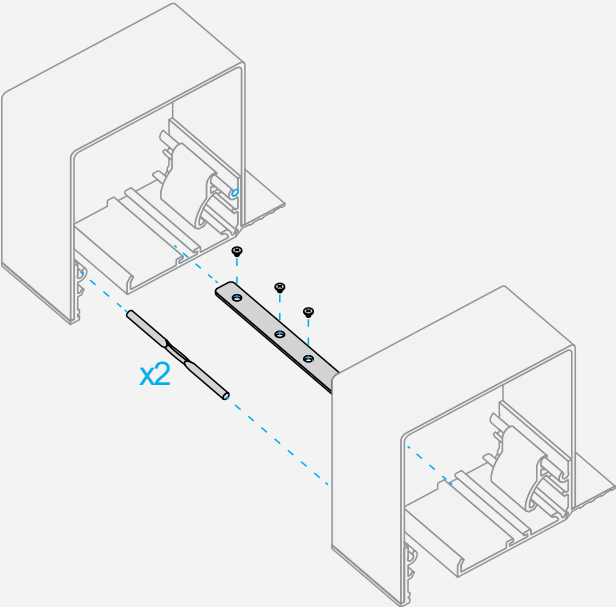
Installing Hinge



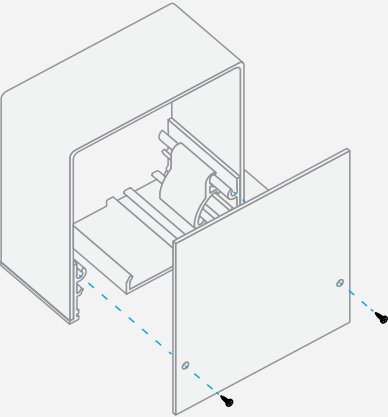
Installing Cover



Joining Boxes

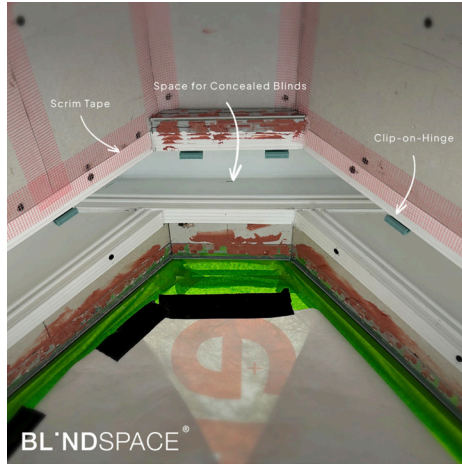
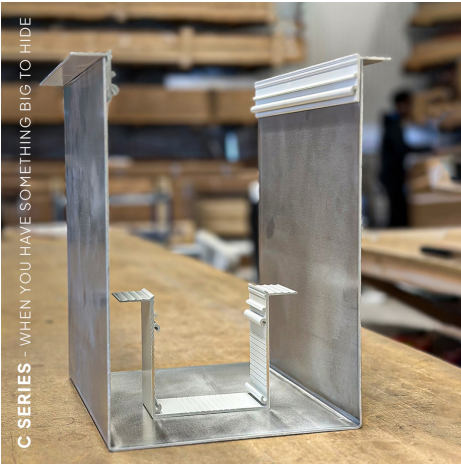
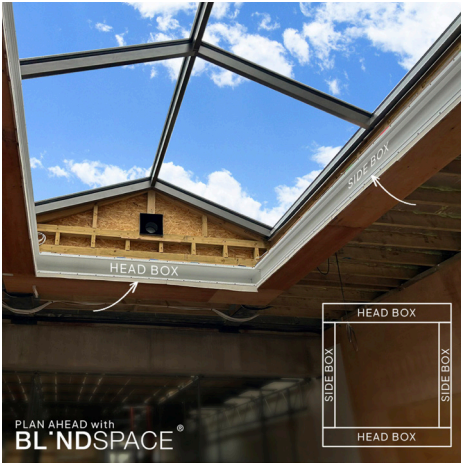


Installing End Cap



C SERIES

CUSTOM SIZES FOR ALL SHADE TYPES



BL'NDSPACE[®]
FOR
windowmodes