


WireFree™

100% wireless
motors for interior window coverings.



Get your creations moving...

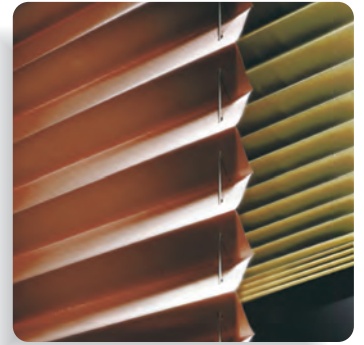
...it will change everything!

With Somfy, take control of your interior window coverings...

Somfy offers an innovative and simple line of completely battery-powered WireFree™ motors. These motors install in minutes and provide a perfect solution for areas where access to traditional power outlets or wiring may be a challenge, such as skylights and doors. This allows the ability to create the best living environment with optimal natural light levels at the press of a button.



Roller/Solar Shades



Cellular/Pleated Shades

WireFree™ Range

Roll Up WireFree™

Cord Lift WireFree™

Tilt WireFree™

Applications

	Maximum Shade Size*
Roller/Solar Shade	10%: 72" x 104" 5%: 72" x 96" 3%: 72" x 72"
Sheer Horizontal with Tilt control	Light Filtering, 112" x 128" Room Darkening, 112" x 120" 2" & 3" vanes
Roman/Woven Shade	11lbs

* Based on a Rollease 1.5" tube

	Maximum Shade Size*
Cellular/Pleated Shade	120" x 120"

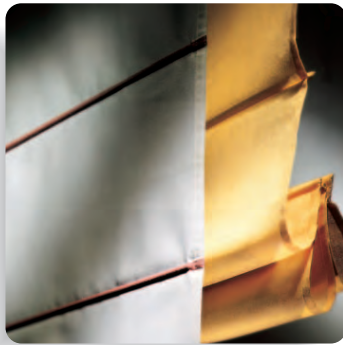
*Based on 1/2 single cell light filtering utilizing RollEase spears/traversing shaft cord lift systems

	Maximum Blind Size
2" Horizontal Blind	≤ 96 sq. ft. Basswood

Somfy's 100% wireless WireFree™ motor range enhances your creations without changing the design or making them more complicated to install. Motor options are available for virtually all window covering types including:



Horizontal Blinds



Roman/Woven Shades



Sheer Horizontal Shades

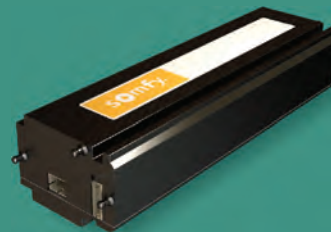
Technologies



Motor Characteristics



12V DC motor Radio Technology Somfy® (RTS) version or integrated IR with sensor accessory



12V DC motor Radio Technology Somfy® (RTS) version



12V DC motor Radio Technology Somfy® (RTS) version or IR with sensor accessory

WireFree™ Motor Specifications



- Voltage
- Current
- Power
- Limit Setting
- Radio Frequency (built-in)
- Motor Dimensions
- Speed
- Torque
- Motor & Accessories

Roll Up WireFree™

12V DC
1 A
8 AA Lithium Batteries or 12V DC Plug-in Transformer
Electronic encoder based via transmitter
433 MHz (applies to RTS motor #1001683)
Length: 10.4in. (264mm); Minimum Tube ID 1.25in. (30mm)
27 rpm
1 Nm (8.8 in. lb.)

Catalog No.	Description
1001683	Roll Up WireFree™ Motor, Radio Technology Somfy® (RTS)
1000679	Roll Up WireFree™ Motor, Infrared
9013487	Crown and Drive Pack, RollEase® 1.25in. Tube
9013488	Crown and Drive Pack, RollEase® 1.5in. Tube
9013489	Crown and Drive Pack, Silhouette™ (post March 04')
9013486	Crown and Drive Pack, Shangri-La™/Vienna Tube
9014046	Crown and Drive Pack, Louvolite 1 5/8in. Tube
9015288	Crown and Drive Pack, Acmeda 44 Tube
9014406	IR Receiver Eye, White, 10in.
9014539	IR Receiver Eye, Black, 10in.

Cord Lift WireFree™

12V DC
1.2 A
8AA Lithium Batteries or 12V DC Plug-in Transformer
Electronic encoder based via transmitter
433 MHz
Length: 4.19in. (113.95mm); Height: 1.23in. (31.24mm)
72 rpm
.34 Nm (3in. lb.)

Catalog No.	Description
1001684	Cord Lift WireFree™ Motor Radio Technology Somfy® (RTS)
9013291	Cord Lift WireFree™ RTS Programming Reset Tool
SHAFT ADAPTERS (REQUIRED)	
9013269	4mm Square Shaft Adapter Fits: New Graber Easy Up®
9013283	Spears Shaft Adapter Fits: Comfortex/Kensington Omni-Rise, Kirsch/Levolor Accordia, RollEase® 1.5in. VersaRail & Graber old style Easy Up® systems.
9013284	Tape Reel Shaft Adapter Fits: Hunter Douglas EasyRise™ *, Kensington Deluxe Cord Loop® System
9013285	5mm Hex Shaft Adapter for Somfy CTS Fits: RollEase® 1.5in. VersaRail, Comfort/Kensington Omni-Rise, Graber old style Easy Up®, Hunter Douglas EasyRise™, Kensington Deluxe Cord Loop systems
9013268	5mm Square Shaft Adapter Fits: Hunter Douglas, Easy Glide® 3/8in. Duette
9015899	"V" Notch Shaft Adapter Fits: Comfortex, Turnils, Flexo (Global Rail)
HEADRAIL ADAPTERS-OPTIONAL	
9013287	Fits: Hunter Douglas EasyRise™*
9013288	Fits: New Graber Easy Up® Cord Loop
9013443	Fits: Kensington Deluxe Cord Loop
9013444	Fits: Hunter Douglas 3/8in. Easy Glide Duette*
9015900	Fits: Comfortex Global Rail

*Note: Currently not adaptable to New EasyRise™ systems

Tilt WireFree™

12V DC
.4 A
8AA Lithium Batteries or 12V DC Plug-in Transformer
Electronic encoder based via transmitter
433MHz2 (applies to RTS motor #1000678)
Length: 3.6in. (91.4mm) x 2in. (50.8mm); Height: x 1.2in. (31.5mm)
12rpm
1.1 Nm (9.6 in. lb.)

Catalog No.	Description
1000678	Tilt WireFree™ Motor, Radio Technology Somfy® (RTS)
1000677	Tilt WireFree™ Motor, Infrared (IR)
9014528	Low Profile Headrail Adapter (required for 1 1/2in. X 2 1/4in. headrail)
9014529	Headrail Adapter (required for 2in. X 2 1/4in. headrail)
9014535	Shaft Adapter - 5.6mm hexagonal
9014536	Shaft Adapter - D Rod
9014540	Shaft Adapter - 4mm Square
9014406	IR Receiver Eye, White, 10in.
9014539	IR Receiver Eye, Black, 10in.

● Power Section



9014020
12V DC Reloadable Battery Tube
(batteries not included)



9015580
Dual Reloadable Battery Tube (harness only)
to connect 2 reloadable battery tubes



9014834
8 AA Lithium Battery Package



1822192
12V DC Plug-In Transformer
with 25ft. cable (white)

NOTE: Items in the power section are compatible with all WireFree™ motors.

WIREFREE™ MOTORS ARE AVAILABLE WITH FLEXIBLE CONTROL OPTIONS TO CREATE THE IDEAL AMBIANCE WITH THE PRESS OF A BUTTON.

Radio Technology Somfy® (RTS)



Radio Technology Somfy®

- Built-in Radio Technology Somfy® (RTS) control
- Compatible with the full range of Somfy RTS controls
- Programmable limit (stop) settings via a hand-held transmitter or wall switch
- Multi-channel radio capability with individual and/or group control



More than 10 million installations throughout the world

A patented radio control platform which enables users to adjust window coverings from a distance of 65 ft. without the need to point the transmitter

Infrared (IR)



- Infrared control via external receiver eye
- Multi-channel infrared capability with group control
- Programmable limit (stop) settings via transmitter
- Compatible with 3rd party programmable infrared remotes

Infrared (IR) Controls

Improved ergonomic design
(Roll Up WireFree™ IR sensor required)
(Tilt WireFree™ IR sensor required)



*Infrared Control is not available with the Cord Lift WireFree™ motor.

CONTROL OPTIONS INCLUDE RADIO TECHNOLOGY SOMFY® (RTS) OR INFRARED SYSTEMS.

Telis Hand-Held Remotes RTS

Single Channel and Five Channel Hand-Held Transmitters



Pure Finish
1810632 1810633



Silver Finish
1810639 1810641



Lounge Finish
1810650 1810652



Patio Finish
1810643 1810645

Telis 16 RTS

16 Channel Hand-Held Transmitter with On-screen Display



Pure Finish 1811081
Silver 1811082

Telis Modulis RTS Hand-Held Remotes

Single Channel and Five Channel Hand-Held Transmitters with scroll wheel for precision tilting of horizontal blind slats



Pure Finish
1810974 1810765



Silver Finish
1810975 1810663



Lounge Finish
1810976 1810664

Telis 6 Chronis RTS

Programmable Timer with on-screen display



Pure Finish 1805217
Silver Finish 1805218

DecoFlex WireFree™ RTS

Single to Five Channel Wireless Wall Switches



1810897 1811072 1810830

DecoFlex Table Top Accessory

WireFree™ RTS

Single to Five Channel Table Top Accessory Switch must be ordered separately



1810972 1811051



Sunis Indoor
WireFree™ RTS
Sun Sensor

9013707



Thermo Sunis Indoor
WireFree™ RTS
Sun & Temperature Sensor

9013708

For additional information regarding Somfy's WireFree™ motor range, please call 1-877-43-SOMFY or visit us at www.somfysystems.com/wirefree

**Somfy Systems, Inc.
North America Headquarters**

121 Herrod Blvd
Dayton, NJ 08810
(P) 800 22 SOMFY
(P) 609 395 1300
(F) 609 395 1776

Florida

6100 Broken Sound Pkwy N.W.
Suite 14
Boca Raton, FL 33487
(P) 877 227 6639
(P) 561 995 8376
(F) 561 995 7502

California

15291 Barranca Pkwy
Irvine, CA 92618
(P) 877 727 6639
(F) 949 727 3775

Somfy ULC

Somfy Canada

6315 Shawson Drive Unit 1
Mississauga, Ontario L5T1J2
(P) 800 667 6639
(P) 905 564 6446
(F) 905 564 2679

